

ANNUAL REPORT 2023

OVERVIEW

The Missouri Department of Higher Education & Workforce Development (MDHEWD) works with the state's colleges and universities to help students achieve their education and career goals and to increase the percentage of Missourians with degrees and certificates to provide a skilled and knowledgeable workforce. The department works alongside local workforce boards to help job seekers gain valuable training and skills to enter the workforce and stay in the workforce.

MDHEWD continues to work toward reaching the goals established in its strategic plan, which the Coordinating Board for Higher Education developed and approved during FY 2022. The strategic plan, *Building Missouri's Future: A strategic plan to provide pathways and reduce barriers to educational attainment and workforce participation*, guides initiatives and priorities in Missouri. The plan was created using data to determine statewide needs and compare Missouri to other Midwestern states. It outlines a comprehensive plan for education, training, and the public workforce system to encourage economic growth and personal success among Missourians.

Missouri strives to be the best among Midwestern states in educational attainment and labor force participation by 2030.

Three main goals were established as part of the strategic plan: To reach 60 percent educational attainment, 70 percent labor force participation, and to be the Best Place to Work in state government.

ACCESS

- The U.S. Department of Labor announced that MDHEWD will receive a \$5 million Quality Jobs, Equity, Strategy and Training (QUEST) Disaster Recovery Dislocated Worker Grant. The grant will support unemployed and underemployed Missourians to access, return to, or advance in high-quality jobs in infrastructure, environment and climate, the care economy, and other critical and growing industries. This grant will also support qualified individuals who are pursuing postsecondary education by removing barriers that may prohibit them from completing their degree or certificate.
- The U.S. Department of Labor (USDOL) tapped Missouri to take part in the National Expansion Employment Opportunities Network (NEON) initiative with the goal of increasing competitive integrated employment (CIE) for those with disabilities. Missouri was awarded 300 technical assistance hours that will include policy consulting and capacity building assistance.



SUCCESS

- A FAFSA website was launched to help keep students informed while the 2024-25 Free Application for Federal Student Aid (FAFSA) filing period was delayed. The new website includes information about what individuals can do now to prepare, how to file, and what to review for the FAFSA. The website includes easy-to-follow steps, answers to frequently asked questions, infographics, and helpful blogs.
- MDHEWD continues to partner with Coursera to help Missourians gain skills that will improve their job performance and grow their career for free. More than 6,500 Missourians have completed over 2,200 courses through the partnership, which began in July 2020 as part of the Coursera Workforce Recovery Initiative to help displaced workers get back to work.

AFFORDABILITY

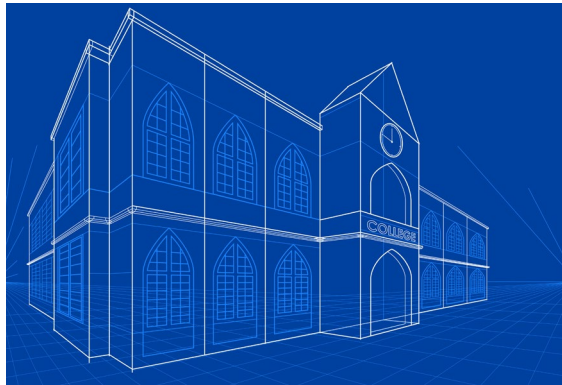
- More than \$149 million in state financial aid was awarded to 59,579 Missouri students through 10 grant and scholarship programs, including more than \$72 million through the Access Missouri Grant.

PROGRAM APPROVAL

- The department approved the addition of 164 new academic programs and the deletion or inactivation of 95 programs at Missouri's public colleges and universities. The department also reviewed 98 new academic programs while deactivating or deleting 80 programs offered by the state's independent institutions.

MOEXCELS

- In FY 2023, 28 proposals totaling \$50.8 million were submitted. The General Assembly appropriated 21 projects totaling \$31.4 million. MoExcels funding was earmarked to facilitate development and expansion of employer-driven education and training programs and initiatives to substantially increase educational attainment.



89,332 certificates & degrees were awarded by Missouri public, independent, and proprietary institutions during the 2022-23 academic year.

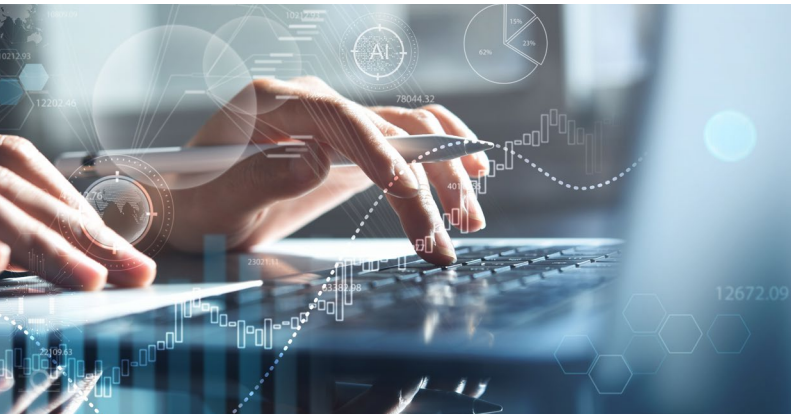
337,624 students were enrolled at Missouri's public two- and four-year, independent, and proprietary institutions in 2022-23.

APPRENTICESHIPS & WORK-BASED LEARNING

- Missouri is ranked second in the nation for new apprenticeships and third for completed apprenticeships. Missouri continues to push for even more opportunities, announcing the goal to serve 55,000 new apprentices.
- There are more opportunities for Missouri's youth to receive hands-on learning and join the state's workforce through registered youth apprenticeships. There are 29 registered programs, with 353 active apprentices in occupations including healthcare, cybersecurity, transportation, construction, and advanced manufacturing.
- The Urban League of Metropolitan St. Louis, YWCA Metro St. Louis, and Full Employment Council, through \$3.3 million in funding from MDHEWD's Office of Apprenticeship and Work-Based Learning (OAWBL), have created the "Interstate Partnership Agreement" to serve hundreds of apprentices that pursue a career as a childcare worker. The goal of the Childhood Development Associate Registered Apprenticeship Training Program is to provide more than 250 Missourians with an apprenticeship in the childcare industry throughout the Kansas City, St. Louis and southwest areas of the state.

RESEARCH AND DATA

- The Office of Performance & Strategy released important data to demonstrate Missouri's current economic situation, including monthly Jobs Reports, monthly Job Ad Comparisons, quarterly Real-Time Labor Market Summaries, the Economic and Workforce Report, and many more.
- Student Right to Know fulfilled requirements of Missouri House Bill 1606 (2018) and Senate Bill 297 (2021). The collection of data is designed to help students make informed decisions about their future. It includes information about cost of attendance, student loans, graduate earnings, graduation rates, employment and salary outcomes, program costs, and time-to-completion.



Our Mission:

To put Missourians on a path to learn, work, and prosper.

Our Vision:

Every Missourian empowered with the skills and education needed for success.

Our Values:

Teamwork

Collaboration

Accountability

Work-Life Balance

Our Principles:

People-centered

Equity-focused

Impact-driven

Workforce-aligned

BUILDING MISSOURI’S FUTURE: A STRATEGIC PLAN TO PROVIDE PATHWAYS AND REDUCE BARRIERS TO EDUCATIONAL ATTAINMENT AND WORKFORCE PARTICIPATION

The Missouri Department of Higher Education & Workforce Development is making progress in its goal of 60 percent of Missourians gaining an education beyond high school by 2030, based on the latest information from the Lumina Foundation. The goal is for 60 percent of Missourians between the ages of 25 and 64 to have a degree or high-quality credential above the high school graduate level by 2030.

The level of education for Missourians, or educational attainment, rose 3.5 percentage points to 50.5 percent from 2019 to 2021, according to the Lumina Foundation’s A Stronger Nation report. That means that more than 50 percent of Missourians between the ages of 25-64 have gotten a degree or credential.

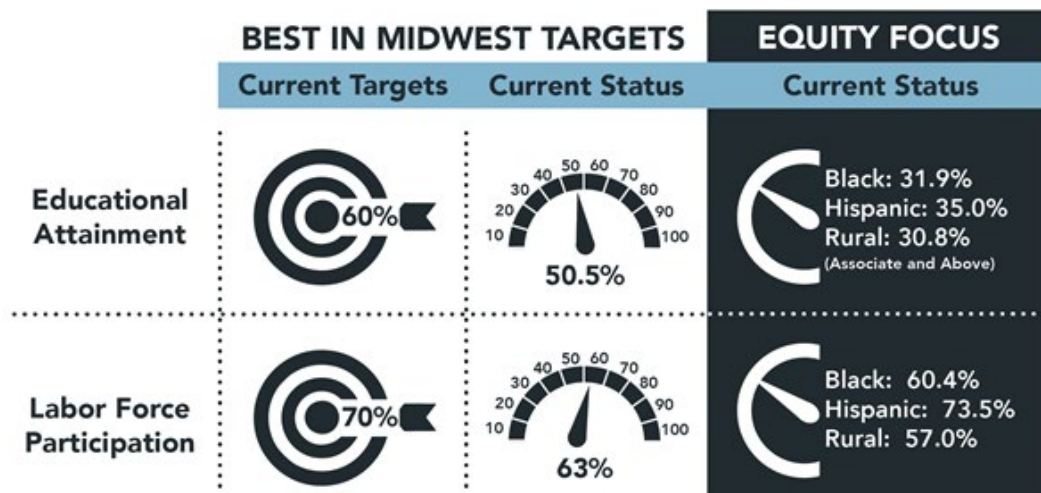
The department’s strategic plan also recognizes the need for every Missourian to be represented in order to reach this goal, focusing on the Black, Hispanic, and rural equity populations.

Educational attainment data for these groups is not available as part of the Lumina report and is only available at the associate degree level and above. To ensure a focus on progress by these groups, the department develops an estimate of each group’s progress.

Educational attainment for associate degree and above for the Hispanic population increased by 6.1 percentage points from 2019, reaching 35 percent in 2021. Educational attainment for the Black working-age population was 31.9 percent, an increase of 3.5 percentage points.

Educational attainment for the rural population reached 30.8 percent, up 2.1 percentage points from 2019. Total Missouri educational attainment at the associate level and above was 43 percent, up from 41 percent in 2019.

For more information about MDHEWD’s strategic plan, visit dhewd.mo.gov/strategicplan.php.



More information

Visit dhewd.mo.gov/about/annualreports.php for more information about:

- Student enrollment
- Student persistence
- State student financial aid
- Academic program actions
- Proprietary school certification
- Core budget recommendations

ANNUAL REPORT 2023

STUDENT ENROLLMENT

Total headcount enrollment at public universities

Institution	2018	2019	2020	2021	2022
Harris-Stowe State University	1,716	1,630	1,400	1,210	1,084
Lincoln University	2,478	2,436	2,012	1,794	1,833
Missouri Southern State University	5,989	5,586	5,036	4,346	4,135
Missouri State University	23,697	23,450	23,502	22,926	22,531
Missouri University of Science & Technology	8,601	8,088	7,642	7,241	7,080
Missouri Western State University	5,684	5,413	4,902	4,386	4,023
Northwest Missouri State University	6,855	7,102	7,262	7,868	8,503
Southeast Missouri State University	11,038	10,603	9,984	9,838	9,914
Truman State University	5,842	5,222	4,655	4,225	3,960
University of Central Missouri	11,487	11,229	9,959	10,530	11,637
University of Missouri-Columbia	29,843	30,014	31,089	31,401	31,304
University of Missouri-Kansas City	16,375	16,388	16,147	16,003	15,703
University of Missouri-St Louis	16,441	15,988	13,874	15,189	15,181
Public university total	146,046	143,149	137,464	136,957	136,888

Total headcount enrollment at public community and technical colleges

Institution	2018	2019	2020	2021	2022
Crowder College	4,521	4,398	4,197	3,982	4,032
East Central College	2,629	2,649	2,593	2,657	2,692
Jefferson College	4,431	4,196	3,735	3,672	3,613
Metropolitan Community College	16,351	15,770	13,085	13,874	12,872
Mineral Area College	2,885	2,640	2,411	2,282	2,289
Missouri State University - West Plains	1,869	1,951	1,920	1,960	1,770
Moberly Area Community College	5,174	4,834	4,862	4,492	5,004
North Central Missouri College	1,855	1,746	1,599	1,644	1,772
Ozarks Technical Community College	12,217	11,758	11,236	10,553	10,889
St. Charles Community College	6,269	6,363	6,014	5,702	5,797
St. Louis Community College	18,157	17,294	15,206	14,910	14,301
State Fair Community College	4,728	4,284	3,927	3,783	3,724
State Technical College	1,471	1,724	1,927	2,023	2,187
Three Rivers College	3,076	2,965	2,753	2,685	2,623
Public community and technical college total	85,633	82,572	75,465	74,219	73,565

STUDENT ENROLLMENT

Total headcount enrollment at not-for-profit independent institutions

Institution	2018	2019	2020	2021	2022
Avila University	1,626	1,527	1,413	1,376	1,307
Central Methodist University-CLAS	1,148	1,145	1,141	1,143	1,080
Central Methodist University-CGES	3,433	3,821	3,429	3,244	3,282
College of the Ozarks	1,565	1,546	1,489	1,478	1,487
Columbia College	12,097	9,920	8,347	6,767	6,054
Cottey College	277	256	283	303	311
Culver-Stockton College	1,068	1,010	1,006	932	999
Drury University	1,729	1,741	1,691	1,615	1,595
Drury University - CCPS	1,481	1,279	1,024	864	747
Evangel University	2,111	2,300	2,185	2,129	2,367
Fontbonne University	1,290	1,199	1,112	955	955
Hannibal-LaGrange University	874	805	740	714	494
Lindenwood University	9,473	8,389	7,374	6,992	6,990
Maryville University	9,139	10,013	10,979	10,599	9,959
Missouri Baptist University	5,313	5,309	4,855	4,970	5,231
Missouri Valley College	1,869	1,769	1,675	1,773	1,531
Park University	11,243	11,319	10,084	8,634	7,483
Rockhurst University	3,134	2,980	3,683	3,600	3,391
Saint Louis University	14,438	12,799	12,229	13,474	15,751
Southwest Baptist University	3,325	3,280	3,039	2,709	2,386
Stephens College	756	661	622	593	561
Washington University	15,852	16,191	15,449	16,973	17,012
Webster University	11,638	9,966	8,239	6,745	6,218
Westminster College	717	658	609	654	607
William Jewell College	808	739	751	805	853
William Woods University	2,240	2,153	2,109	1,730	1,504
Independent (not-for-profit) four-year total	118,644	112,775	105,557	101,771	100,144

Note: Drury University split its institutional reporting in 2018. Percentage change figures for Drury University include the College of Continuing Professional Studies (CCPS).

STUDENT ENROLLMENT

Headcount enrollment

Type of Institution	2018	2019	2020	2021	2022	Percent change 2018-2022	Percent change 2021-2022
Independent institutions	118,644	112,775	105,557	101,771	100,144	-15.6%	-1.6%
Public institutions	231,679	225,721	212,929	211,176	210,453	-9.2%	-0.3%
Public universities	146,046	143,149	137,464	136,957	136,888	-6.3%	-0.1%
Public community and technical colleges	85,633	82,572	75,465	74,219	73,565	-14.1%	-0.9%
Statewide public and independent institutions	350,323	338,496	318,486	312,947	310,597	-11.3%	-0.8%

Full-time equivalent enrollment

Type of Institution	2018	2019	2020	2021	2022	Percent change 2018-2022	Percent change 2021-2022
Independent institutions	86,759	83,707	79,767	77,716	75,541	-12.9%	-2.8%
Public institutions	166,414	161,289	153,570	149,613	148,203	-10.9%	-0.9%
Public universities	112,020	108,651	104,443	101,760	100,376	-10.4%	-1.4%
Public community and technical colleges	54,394	52,638	49,127	47,853	47,827	-12.1%	-0.1%
Statewide public and independent institutions	253,173	244,996	233,337	227,329	223,744	-11.6%	-1.6%

First-time, full-time, degree-seeking undergraduate enrollment

Type of Institution	2018	2019	2020	2021	2022	Percent change 2018-2022	Percent change 2021-2022
Independent institutions	10,622	10,258	9,630	10,397	10,120	-4.7%	-2.7%
Public institutions	32,882	31,692	29,318	28,304	28,609	-13.0%	1.1%
Public universities	18,661	17,984	16,484	15,459	15,671	-16.0%	1.4%
Public community and technical colleges	14,221	13,708	12,834	12,845	12,938	-9.0%	0.7%
Statewide public and independent institutions	43,504	41,950	38,948	38,701	38,729	-11.0%	0.1%

ANNUAL REPORT 2023

STUDENT PERSISTENCE

The Missouri Department of Higher Education & Workforce Development is continually working to increase student persistence by implementing initiatives such as corequisite remediation, Missouri Math Pathways, the CORE 42, and 15 to Finish. Student persistence data represents the percentage of first-time, full-time degree-seeking students at Missouri colleges and universities who enroll in school the following fall.

Public universities

Incoming Cohort	Fall 2017	Fall 2018	Fall 2019	Fall 2020	Fall 2021
Harris-Stowe State University	65.4%	55.4%	63.9%	67.4%	67.5%
Lincoln University	49.7%	53.6%	50.7%	49.9%	48.7%
Missouri Southern State University	61.1%	65.3%	67.0%	58.7%	62.0%
Missouri State University	77.7%	78.0%	79.2%	75.2%	75.9%
Missouri University of Science & Technology	83.4%	81.8%	84.9%	85.1%	86.0%
Missouri Western State University	61.7%	63.1%	63.1%	60.2%	63.0%
Northwest Missouri State University	78.0%	75.7%	75.7%	75.6%	79.6%
Southeast Missouri State University	74.4%	75.3%	80.0%	73.9%	73.4%
Truman State University	83.5%	83.5%	88.3%	84.3%	80.7%
University of Central Missouri	69.7%	73.7%	74.8%	71.3%	72.1%
University of Missouri-Columbia	87.4%	87.9%	89.4%	88.4%	88.6%
University of Missouri-Kansas City	73.2%	76.1%	74.8%	72.2%	77.1%
University of Missouri-St Louis	75.6%	76.8%	82.1%	72.9%	75.0%
Public four-year total	76.9%	77.8%	80.2%	78.1%	79.2%

Public community and technical colleges

Incoming Cohort	Fall 2017	Fall 2018	Fall 2019	Fall 2020	Fall 2021
Crowder College	64.4%	72.8%	66.0%	64.6%	68.1%
East Central College	62.1%	62.7%	59.4%	58.1%	62.7%
Jefferson College	59.5%	60.6%	60.2%	55.2%	59.8%
Metropolitan Community College	61.1%	61.7%	57.9%	58.9%	60.5%
Mineral Area College	62.9%	62.4%	64.0%	62.0%	68.5%
Missouri State University-West Plains	50.6%	55.7%	51.2%	58.5%	62.5%
Moberly Area Community College	61.5%	64.3%	57.3%	64.8%	65.6%
North Central Missouri College	55.3%	54.7%	63.7%	68.2%	75.3%
Ozarks Technical Community College	61.2%	61.0%	62.0%	62.3%	64.5%
St. Charles Community College	64.9%	65.7%	58.2%	57.2%	58.7%
St. Louis Community College	58.7%	62.9%	57.9%	58.9%	61.6%
State Fair Community College	62.4%	60.5%	60.0%	60.3%	64.2%
State Technical College	85.5%	81.9%	82.6%	89.4%	88.0%
Three Rivers College	57.9%	58.7%	61.1%	55.7%	53.2%
Public two-year total	61.7%	63.2%	60.9%	62.0%	64.7%

STUDENT PERSISTENCE

Independent institutions

Incoming Cohort	Fall 2017	Fall 2018	Fall 2019	Fall 2020	Fall 2021
Avila University	68.3%	74.4%	68.6%	65.6%	78.8%
Central Methodist University-CLAS	73.5%	68.9%	70.1%	59.4%	67.3%
College of the Ozarks	75.2%	81.5%	80.2%	78.3%	80.8%
Columbia College	69.2%	63.9%	70.6%	65.2%	62.0%
Cotley College	66.3%	65.6%	75.0%	52.6%	61.2%
Culver-Stockton College	66.9%	57.6%	65.6%	63.8%	64.9%
Drury University	83.1%	78.2%	78.4%	75.9%	78.1%
Drury University- CCPS	n/a	n/a	64.0%	70.6%	84.6%
Evangel University	79.0%	79.8%	80.4%	73.7%	75.3%
Fontbonne University	74.1%	67.8%	78.3%	70.6%	71.7%
Hannibal-LaGrange University	59.4%	61.1%	59.6%	70.5%	57.8%
Lindenwood University	70.3%	63.8%	74.9%	77.7%	77.2%
Maryville University	85.6%	83.0%	82.8%	81.6%	83.0%
Missouri Baptist University	66.3%	70.6%	69.5%	72.6%	66.8%
Missouri Valley College	44.1%	41.9%	52.2%	47.2%	40.8%
Park University	54.7%	66.0%	63.4%	57.2%	59.4%
Rockhurst University	85.6%	82.8%	87.6%	77.0%	76.4%
Saint Louis University	89.6%	90.7%	90.0%	88.8%	86.6%
Southwest Baptist University	71.1%	68.8%	63.8%	67.5%	66.9%
Stephens College	63.6%	63.2%	76.6%	62.7%	62.6%
Washington University	96.7%	96.9%	94.2%	96.1%	96.0%
Webster University	77.9%	78.7%	77.0%	77.2%	78.7%
Westminster College	76.4%	77.5%	72.5%	78.0%	64.5%
William Jewell College	72.7%	78.4%	77.2%	73.8%	74.8%
William Woods University	74.2%	72.3%	69.7%	69.0%	75.4%
Independent (not-for-profit) four-year total	79.2%	77.6%	79.8%	78.5%	78.2%

STATE STUDENT FINANCIAL AID PROGRAMS

State student financial aid disbursed during Fiscal Year 2023

Program	Students	Dollar Amount
A+ Scholarship	13,939	\$52,271,169
Access Missouri Grant	35,717	\$72,752,297
Advanced Placement Incentive Grant	7	\$3,500
Bright Flight Scholarship	8,623	\$21,066,023
Dual Credit/Dual Enrollment Scholarship	596	\$448,316
Fast Track Workforce Incentive Grant	658	\$2,429,310
Kids' Chance Scholarship	2	\$14,000
Minority and Underrepresented Environmental Literacy Program	5	\$35,855
Public Safety Officer Survivor Grant	13	\$97,772
Wartime Veteran's Survivors Grant	19	\$240,979
Totals	59,579	\$149,359,221

A+ Scholarship Program (Section 160.545, RSMo)

The A+ Scholarship serves graduates of A+ designated high schools who meet certain academic and other requirements while in high school and attend a participating public community college or vocational/technical school or certain private two-year vocational/technical schools. Award amounts are based on the student's actual tuition and general fees after the Pell Grant, or other federal, non-loan funding, has been applied.

Access Missouri Financial Assistance Program (Section 173.1101-1107, RSMo)

The Access Missouri Program provides need-based grants to students with an Expected Family Contribution (EFC) of \$12,000 or less, based on the Free Application for Federal Student Aid (FAFSA). In Fiscal Year 2023, the EFC threshold was raised to \$15,000, as provided in statute, to fully expend available funding.

Award amounts vary depending on a student's EFC as well as the type of school attended.

In Fiscal Year 2023, actual maximum and minimum award amounts were \$1,300 and \$300, respectively, for students attending public two-year institutions. For students attending public four-year institutions, State Technical College of Missouri, independent, and virtual institutions, the maximum and minimum award amounts were \$2,850 and \$1,500, respectively.

Advanced Placement Incentive Grant (Section 173.1350, RSMo)

This is a nonrenewable grant designed to encourage high school students to take and score well on Advanced Placement exams in mathematics and science. To qualify for the \$500 award, students must achieve a grade of three or higher on at least two designated Advanced Placement exams while attending a Missouri public high school. Students must also receive an award under the Access Missouri Financial Assistance Program or the A+ Scholarship Program in the same academic year they receive this grant.

Dual Credit/Dual Enrollment Scholarship (Section 173.2505, RSMo)

Passed during the 2022 legislative session, SB 718 created the Dual Credit/Dual Enrollment scholarship, which was administered for the first time during the 2022-2023 academic year. The scholarship, which is based on financial need, covers the cost of tuition and fees for dual credit or dual enrollment courses from an approved Missouri college or university. Students must also have an unweighted cumulative high school grade point average of at least 2.5 on a 4.0 scale or the equivalent and meet the high school's requirements for taking dual credit or dual enrollment coursework.

Fast Track Workforce Incentive Grant (Section 173.2553, RSMo)

Launched in August 2019, Fast Track provides tuition assistance to adults at least 25 years old or individuals younger than 25 who have not been enrolled in education in at least two years. Grant recipients receive financial assistance to work toward a certificate, degree, or industry-recognized credential that fills a high-need skills gap.



Changes to the program made during the 2022 legislative session increased the number of eligible training providers and expanded the program to include apprenticeships. Fast Track is a “last dollar” grant that covers tuition and general fees for students enrolled in a designated program of study at a participating Missouri school or training provider or direct costs of an apprenticeship such as tools, books, and uniforms. Additionally, the Fast Track grant will no longer convert into a loan that must be repaid if students leave Missouri within three years of completing their education program.

The average award amount in Fiscal Year 2023 was \$3,692. Allied health, business/accounting, education, and computer science were the most popular program areas among grant recipients.

Higher Education Academic Scholarship, or “Bright Flight” (Section 173.250, RSMo)

This is a merit-based scholarship for students who achieve an ACT or SAT score in the top 5 percent on or before the June test date of their senior year in high school. Award amounts are tiered based on whether the student's score is in the top 3 percent or top fourth and fifth percentiles. The qualifying scores are determined at the beginning of the student's senior year in high school and are based on the scores achieved by Missouri seniors in the preceding graduating class.

Eligible students scoring in the top 3 percent may receive up to \$3,000 annually. The annual award for students scoring in the top fourth and fifth percentiles is up to \$1,000 annually. Students qualifying in the top 3 percent must receive the maximum \$3,000 award before students in the top fourth and fifth percentiles can be funded.

To be eligible in the top 3 percent in Fiscal Year 2023, high school seniors had to achieve an ACT score of 31 or better or an SAT score of 800 in critical reading AND 800 in math. To be eligible in the top fourth and fifth percentiles in Fiscal Year 2022, high school seniors had to achieve an ACT score of 30 or an SAT score of 760 to 799 in critical reading AND 770 to 799 in math.

Students qualifying in the top three percent received a maximum award of \$3,000 in Fiscal Year 2023. The students qualifying in the top fourth and fifth percentiles did receive funding (\$1,000) for the first time in the program's history.

Kids' Chance Scholarship Program (Sections 173.254-173.258, RSMo)

This program, created in 1998, provides scholarships for children of workers who were seriously injured or died in a work-related accident or from an occupational disease covered by workers' compensation and compensable under chapter 287, RSMo. The scholarships are funded from the interest generated by the Kids' Chance Scholarship Fund. The fund contains \$1 million in principal resulting from the Division of Worker's Compensation deposits of \$50,000 per year made between 1998 and the final deposit in October 2018, as required by legislation.



Minority and Underrepresented Environmental Literacy Program (Section 173.240, RSMo)

This scholarship program assists academically talented minority and underrepresented individuals pursuing an undergraduate or graduate degree in an environmental course of study. Applicants are selected by the Minority Environmental Literacy Advisory Committee based on academic achievement as evidenced by grade point average and standardized test scores, involvement in school and community activities, and leadership characteristics. MDHEWD determines award amounts based on the amount of funding appropriated to the program and the number of eligible applicants.

Public Safety Officer or Employee's Child Survivor Grant Program (Section 173.260, RSMo)

This is a grant program for public safety officers who were permanently disabled in the line of duty. Children younger than 24 years old who are dependents of officers or dependents of Missouri Department of Transportation employees engaged in the construction or maintenance of the state's highways, roads, and bridges and were killed or totally and permanently disabled in the line of duty are also eligible. Eligibility also extends to spouses of officers killed or totally and permanently disabled in the line of duty. The maximum grant amount is the lesser of the actual tuition charged at the school in which the student is enrolled full-time or the amount of tuition charged to an undergraduate Missouri resident enrolled full-time in the same class level and academic major at the University of Missouri-Columbia. The grant may be renewed annually until the student obtains a baccalaureate degree or, in the case of a dependent child, until the student is 24 years old, whichever occurs first.

Wartime Veteran's Survivors Grant Program (Section 173.234, RSMo)

This program was designed to provide up to 25 grants for tuition assistance, room and board, and books for students who are survivors of post-9/11 war veterans whose deaths were a result of combat action or were attributable to an illness contracted while serving in combat, or who became at least 80 percent disabled as a result of injuries sustained in combat. Although the Wartime Veteran's Survivors Grant program became effective in 2008, the first award was made in 2011, which was the first year funds were appropriated for this program.

ANNUAL REPORT 2023

ACADEMIC PROGRAM ACTIONS

The Coordinating Board for Higher Education has a statutory responsibility to approve new academic programs and program changes; regulate the off-site delivery of existing programs; and approve the establishment of residence centers and instructional sites by public higher education institutions.

Independent institutions are requested to submit proposed new programs and programmatic changes for review and comment. The program must be reviewed as a stipulation for inclusion in the statewide inventory of approved programs.

The following charts summarize the number of programs added, deleted, inactivated, withdrawn, and conducted off-site for public and independent institutions during Fiscal Year 2023.

Public Institutions

Action	Certificate	Associate	Baccalaureate	Graduate	Total
Deleted	27	5	16	6	54
Inactivated	24	12	2	3	41
Program Changes*	50	20	67	25	162
New**	111	22	23	8	164

*Includes options added, inactivated, and deleted, titles changed, CIP changes, and programs combined

** Includes certificates added through the program change process at the main campus and off-site locations

Independent Institutions

Action	Certificate	Associate	Baccalaureate	Graduate	Total
Deleted	35	1	24	14	74
Inactivated	3	2	0	1	6
Program Changes*	7	1	44	12	64
New**	44	17	20	17	98

*Includes options added, inactivated, and deleted, titles changed, CIP changes, and programs combined

** Includes certificates added through the program change process at the main campus and off-site locations

Provisional Programs

Action	Two-Year	Four-Year	Total
Recommended full approval	1	10	11
Recommended review in two years	8	8	16
Programs deleted or inactivated	1	0	1

Academic Programs approved during Fiscal Year 2023

PUBLIC COMMUNITY & TECHNICAL COLLEGES

East Central College

- AAS, Law Enforcement, CIP 430107, January 2023
- C0, Emergency Medical Technician, CIP 510904, March 2023
- C0, Health Security, CIP 510707, March 2023
- C1, Law Enforcement, CIP 430107, March 2023

Jefferson College

- C0, Machining Career Readiness, CIP 480501, June 2023

Mineral Area College

- C0, Mechatronics, CIP 150403, August 2022
- C1, Digital Medical Technology, CIP 100202, September 2022
- C1, Manufacturing Technology, CIP 150613 September 2022
- AAS, Manufacturing Technology, CIP 150613 September 2022

Missouri State University-West Plains

- AAS, Information Technology, CIP 110103, July 2022
- C0, Aerial & Geospatial Technology, CIP 110101, May 2023
- C0, Data Analytics, CIP 110101, June 2023
- C0, Mechatronics, CIP 150613, June 2023
- C0, Veterinary Assistant, CIP 018301, June 2023
- C0, Welding & Fabrication Technology, CIP 150613, June 2023

Moberly Area Community College

- C1, Practical Nursing, CIP 513901, June 2023
- AAS, Surgical Technology, CIP 510909, June 2023
- A.D.N., Associate Degree in Nursing, CIP 513801, June 2023

North Central Missouri College

- C1, PN Program, CIP 513901, December 2022
- A.D.N., Associate in Applied Science Nursing, CIP 513801, December 2022
- AAS, Radiologic Technician, CIP 510911, December 2022
- AAS, Surgical Technology, CIP 510909, December 2022
- C2, Practical Nursing, CIP 513901, February 2023
- C0, Information Technology Specialist, CIP 110101, May 2023
- C0, Information Technology Technician, CIP 110101, May 2023

Ozarks Technical Community College

C0, Honors Studies, CIP 240199, November 2022
C0, Agriculture Certificate, CIP 010000, April 2023
C0, Aviation Private Pilot Flight Training Certificate of Specialization, CIP 490102, April 2023
C0, Aviation Instrument Rating Flight Training Certificate of Specialization, CIP49 0102, April 2023
C0, Aviation Flight Instructor Training Certificate of Specialization, CIP 490102, April 2023
C0, Professional Writing Certificate, CIP 320205, April 2023
C1, Business and Marketing, CIP 521401, April 2023
AA, General Studies, CIP 240199, April 2023
AA, Business, CIP 520201, April 2023
AAS, Technical Management, CIP 150612, April 2023

St. Charles Community College

AFA, Graphic Design, CIP 500402, November 2022
AAS, Welding, CIP 480508, November 2022
C1, Applied Linguistics, CIP 160105, January 2023
C1, Plumbing & Pipefitters Pre-Apprenticeship, CIP 460599, January 2023
C0, Electrical-Electronics Systems, CIP 470199, February 2023
C0, Facilities Maintenance Systems, CIP 470303, February 2023
C0, Heating, Ventilation & Air Condition (HVAC-R) Systems, CIP 470201, February 2023
C0, Hydraulics & Pneumatic Systems, CIP 151103, February 2023
AAS, Interdisciplinary Technology, CIP 150612, March 2023
AAS, Mechatronics Engineering Technology, CIP 150613, March 2023
AAS, Surgical Technology, CIP 510909, March 2023

State Fair Community College

AA, General Studies, CIP 240101, May 2023
AAS, Surgical Technology, CIP 510909, December 2022
AAT, Teaching, CIP 131399, May 2023

State Technical College of Missouri

C0, Entrepreneurship Certificate, CIP 520204, March 2023
C0, Supervisor Management Certificate, CIP 520204, March 2023
AAS, Agriculture Operations, CIP 010101, March 2023

Three Rivers College

C1, Agribusiness, CIP 010201, April 2023
C1, Agriculture Systems Technician, CIP 019999, April 2023
C1, Forestry, CIP 030511, April 2023
C1, Advanced EMT, CIP 510904, May 2023
AAS, Cybersecurity, CIP 111003, May 2023
AAS, Surgical Technology, CIP 510909, May 2023
C1, Diesel Technology, CIP 470605, June 2023

PUBLIC UNIVERSITIES

Lincoln University

GRCT, Educational Technology, CIP 130501, December 2022

C0, Police Academy, CIP 430107, January 2023

BSED, Agriculture Education, CIP 131310, January 2023

Harris-Stowe State University

C0, Geoint Certificate, CIP 430407, December 2022

C0, Geoscience Certificate, CIP 400699, December 2022

C0, Biotechnology Certificate, CIP 261201, June 2023

Missouri Southern State University

C0, Global Black Studies Certificate, CIP 050101, December 2022

C0, Behavioral Neuroscience Certificate, CIP 422706, December 2022

GRCT, Graduate Certificate of Business Analysis, CIP 307102, December 2022

MS, Data Analytics, CIP 307101, December 2022

C0, Spanish for the Professions Certificate, CIP 160905, May 2023

C0, Certificate in Cultural Anthropology, CIP 450204, May 2023

C0, Certificate in Theatre Industry, CIP 501004, May 2023

C0, Certificate in Theatre Instruction, CIP 500501, May 2023

BS, Theatre Industry, 501004, May 2023

GRCT, Teacher Leadership Graduate Certificate, CIP 130401, May 2023

GRCT, Digital Course Design and Delivery Graduate Certificate, CIP 130501, May 2023

GRCT Graduate Studies in History Certificate, CIP 540101, May 2023

BSN, RN to BSN Completion Program, CIP 513801, June 2023

Missouri State University

C0, Mental Health and Spirituality, CIP 380201, July 2022

GRCT, Education of the Deaf and Hard of Hearing: Instruction, Auditory Development and Practice, CIP 510204, July 2022

GRCT, Medical Human Anatomy and Physiology, CIP 260403, July 2022

C0, Classical Languages, CIP 161200, January 2023

C0, E-sports Studies, CIP 310599, December 2022

C0, Outdoor Leadership, CIP 310601, January 2023

C0, Recreation Administration, CIP 030207, January 2023

C0, Sustainable Tourism, CIP 030207, January 2023

C0, Science Writing, CIP 231303, April 2023

C0, Sport Administration, CIP 310504, April 2023

C0, The Arts and Literature of the Francophone World, CIP 050124, April 2023

BS, Human Resource Management, CIP 521001, April 2023

BS, International Business, CIP 521101, April 2023

BS, Management and Leadership, CIP 520201, April 2023

GRCT, Criminal Investigation, CIP 450401, April 2023

GRCT, International Affairs, CIP 302001, April 2023

C0, Digital Fashion Design, CIP 190901, April 2023

C0, Religion and the Arts, CIP 380201, April 2023

C0, Event Planning, CIP 520907, June 2023

BA, Culture, Literature & Media, CIP 302601, June 2023

BS, Culture, Literature & Media, CIP 302601, June 2023

Missouri University of Science & Technology

C0 Education of Young Children, CIP 131210, November 2022

C0, Undergraduate Certificate in Medicinal Chemistry, CIP 400599, November 2022

C0, Decision Data Analytics, CIP 450603, January 2023

C0, Energy Economics, CIP 450699, January 2023

C0, Financial Economics & Technology, CIP 450699, January 2023

GRCT, Teacher Leadership, CIP 130301, February 2023

C0, Environmental Science & Policy, CIP 030104, April 2023

C0, Healthcare Psychology, CIP 420101, April 2023

C0, Human Factors Psychology, CIP 420101, April 2023

C0, Industrial/Organizational Psychology, CIP 420101, April 2023

C0, Neuroscience, CIP 261501, March 2023

C0, Psychology of Diversity & Inclusion, CIP 420101, April 2023

Missouri Western State University

GRCT, K-12 Special Reading Graduate Certificate, CIP 131315, July 2022

MSW, Master of Social Work, CIP 440701, August 2022

Northwest Missouri State University

BS, Social Media Management, CIP 090909, January 2023

MS, Nutrition, CIP 513101, January 2023

MSED, Special Education with Certification, CIP 131001, February 2023

BA, Public Relations, CIP 090902, May 2023

BS, Public Relations, CIP 090902, May 2023

PMCT, Central Office/Superintendent-District Level Certificate, CIP 130411, May 2023

PMCT, Central Office/Special Education Director-District Level Certificate, CIP 130402, May 2023

Southeast Missouri State University

MS, Agribusiness, CIP 010102, July 2022

BS, Respiratory Therapy, CIP 510908, November 2022

C1, Histotechnician, CIP 511008, December 2022

BA, Anthropology, CIP 151202, April 2023

BS, Aviation Management, CIP 490104, April 2023

BA, Spanish, CIP 160905, April 2023

BS, Financial Econometrics, CIP 450603, June 2023

BSBA, Business Analytics, CIP 307102, June 2023

Truman State University

C0, Data Science Foundations, CIP 307001, January 2023
BFA, Design, CIP 500499, January 2023
BS, Cannabis and Natural Medicinals, CIP 512005, January 2023
BS, Environmental Science, CIP 030104, January 2023
MA, Counseling: Rehabilitation Counseling, CIP 512310, January 2023
MS, Music Therapy, CIP 512305, January 2023
C0, 3D Modeling and Animation Foundations, CIP 500499, May 2023
C0, Design Foundations, CIP 500499, May 2023
C0, Digital Illustration and Motion Graphics Foundations, CIP 500499, May 2023
C0, Fraud Examination, CIP 520301, May 2023
C0, Human Resource Management, CIP 521001, May 2023
C0, Intermediate Spanish Proficiency, CIP 160905, May 2023
C0, Laboratory Animal Care, CIP 260101, May 2023
C0, Laboratory Management and Safety, CIP 260101, May 2023
C0, Laboratory Plant Care, CIP 010000, May 2023
C0, Microbiology, CIP 260101, May 2023
C0, Molecular and Cell Biology Methods, CIP 260101, May 2023
C0, Motions Graphics Foundations, CIP 500401, May 2023
C0, Web Design Foundations, CIP 110801, May 2023

University of Central Missouri

BS, Nursing, with options in Pre-Licensure, RN-BSN Nursing, CIP 513801, July 2022
BS, Data Science, CIP 307001, February 2023
MS, Data Science and Artificial Intelligence, CIP 307110, February 2023
GRCT, Teaching English as a Second Language, CIP 131401, June 2023

University of Missouri-Columbia

C0, Personal Branding, CIP 521908, July 2022
C0, Digital Marketing, CIP 521404, October 2022
GRCT, Entrepreneurship & Innovation Management, CIP 520701, January 2023
GRCT, Reproductive & Genomic Technologies for Livestock, CIP 010999, January 2023
C0, Corporate Finance, CIP 520801, March 2023
GRCT, Academic Advising, CIP 130406, June 2023
GRCT, Digital Merchandising, CIP 520208, March 2023
GRCT, Evidence and Equity Based Literacy Instruction, CIP 130301, June 2023
GRCT, Science of Reading and Special Education, CIP 131001, June 2023

University of Missouri-Kansas City

CO, Writing, Editing, and Publishing, CIP 230101, May 2023

GRCT, English Language and Literature, CIP 230101, May 2023

GRCT, Graduate Certificate in Structural Engineering, CIP 140801, May 2023

University of Missouri-St. Louis

BS, Financial Technology, CIP 270305, July 2022

CO, Geographic Information Systems, CIP 450702, May 2023

CO, East Asian Studies, CIP 050104, June 2023

INDEPENDENT INSTITUTIONS

Central Methodist University

AS, Business, CIP 520101, August 2022

BS, Business, CIP 520101, August 2022

MS, Educational Administration, CIP 130499, August 2022

MS, Information Technology, CIP 111099, September 2022

College of the Ozarks

BS, Applied Nutrition, CIP 190501, October 2022

BS, Finance, CIP 520801, October 2022

BS, Management, CIP 520201, October 2022

BS, Marketing, CIP 521401, October 2022

Columbia College

MS, Accountancy, CIP 520301, December 2022

CO, Business Analytics, CIP 307102, June 2023

CO, Financial Planning and Services, CIP 520804, June 2023

CO, Logistics Materials and Supply Chain Management Certificate, CIP 520203, June 2023

CO, Organizational Leadership Certificate, CIP 520213, June 2023

CO, Organizational Leadership: Fiscal and Analytical Certificate, CIP 520213, June 2023

CO, Sports Analytics, CIP 307102, June 2023

CO, Supply Chain Analytics, CIP 307102, June 2023

CO, Supply Chain Management: Logistics and Transportation Certificate, CIP 520203, June 2023

CO, Supply Chain Management: Procurement and Sourcing Certificate, CIP 520203, June 2023

BS, Bachelor of Science in Business Analysis, CIP 307102, June 2023

MS, Master of Science in Business Analysis, CIP 307102, June 2023

MS, Master of Science in Finance, CIP 520801, June 2023

Cottey College

BA, History, CIP 540101, September 2022

BA, Theatre, CIP 500512, September 2022

Drury University

MPAS, Master's of Physicians Assistant Studies, CIP 510912, December 2022

C0, Fire Safety Leadership, CIP 430202, January 2023

GRCT, Communication and Organizational Leadership, CIP 090901, January 2023

Evangel University

BA, Strategic Communication, CIP 090199, September 2022

C0, Christian School Instructor, CIP 390401, December 2022

BA, Pre-Military Chaplaincy, CIP 390706, February 2023

BA, Music Theatre, CIP 500509, March 2023

Kansas City University

MA, Health Service Psychology, CIP 422801, June 2023

DDM, Doctor of Dental Medicine, CIP 510401, June 2023

PsyD, Health Service Psychology, CIP 422801, June 2023

Lindenwood University

GRCT, Graduate Certificate in Corrections Administration, CIP 430103, December 2022

GRCT, Graduate Certificate in Police Administration, CIP 430103, December 2022

BS, Radiologic Technology, CIP 510911, January 2023

GRCT, Fast Track Alternative Certification Certificate, CIP 139999, March 2023

Maryville University of St. Louis

GRCT, Data Analytics Certificate, CIP 307101, February 2023

GRCT, Cybersecurity Incident Response Certificate, CIP 290207, June 2023

GRCT, Cybersecurity Penetration Testing, CIP 290207, June 2023

Missouri Baptist University

BSE, Special Education Cross-Cat Disabilities Mild/Moderate, CIP 131007, July 2022

BFA, Musical Theatre, 500509, May 2023

GRCT, Biology Education, CIP 131322, May 2023

GRCT, Chemistry Education, CIP 131323, May 2023

GRCT, Church Revitalization, CIP 390699, May 2023

GRCT, Family Ministry, CIP 390702, May 2023

GRCT, Mathematics Education, CIP 131311, May 2023

GRCT, Strategic Leadership, CIP 520213, May 2023

GRCT, Trauma Informed Educator, CIP 131299, May 2023

MS, Science Education-Biology, CIP 131322, May 2023

MS, Science Education-Chemistry, CIP 131323, May 2023

MS, Science Education-Mathematics, CIP 131311, May 2023

Park University

C0, Global Communications, CIP 090907, May 2023

BA, Criminal Justice, CIP 430103, May 2023

BA, Public Administration, CIP 440401, May 2023

GRCT, Homeland Security, CIP 430301, May 2023
GRCT, Management Accounting, CIP 520205, May 2023
GRCT, Marketing, CIP 521401, May 2023
GRCT, Project Management Certificate, CIP 520211, May 2023
MHA, Healthcare Administration, CIP 510706, May 2023
MPA, Public Affairs, CIP 449999, May 2023
MSE, Educational Administration, CIP 130101, May 2023
MBA, Business Administration, CIP 520201, May 2023
AS, Construction Management, CIP 522001, June 2023
BS, Interdisciplinary Studies, CIP 300000, June 2023
BA, Public Administration, CIP 440401, June 2023
GRCT, Human Resource Management, CIP 450102, June 2023
BS, Social Psychology, CIP 422707, June 2023

Ranken Technical College

AS, Information Technology, CIP 151201, December 2022
C1, Advanced Precision Machining, CIP 480501, May 2023
AS, Advanced Precision Machining, CIP 480501, May 2023
AT, Advanced Precision Machining, CIP 480501, May 2023
C1, Diesel Technology, CIP 470605, May 2023
AS, Diesel Technology, CIP 470605, May 2023
AT, Diesel Technology, CIP 470605, May 2023
C2, Diesel Technology (Daytime), CIP 470605, May 2023
AS, Diesel Technology (Daytime), CIP 470605, May 2023
AT, Diesel Technology (Daytime), CIP 470605, May 2023
C2, Heating, Ventilation, Air Conditioning and Refrigeration Technology, CIP 150501, May 2023
AS, Heating, Ventilation, Air Conditioning and Refrigeration Technology, CIP 150501, May 2023
AT, Heating, Ventilation, Air Conditioning and Refrigeration Technology, CIP 150501, May 2023
AS, Industrial Engineering Technology, CIP 470303, May 2023
AT, Industrial Engineering Technology, CIP 470303, May 2023
C2, Major Appliance Technology, CIP 470106, May 2023
AS, Major Appliance Technology, CIP 470106, May 2023
AT, Major Appliance Technology, CIP 470106, May 2023
C1, Agricultural Engineering Technology, CIP 010201, June 2023
AS, Agricultural Engineering Technology, CIP 010201, June 2023

Rockhurst University

AA, Liberal Studies, CIP 240101, October 2022
BA, Film Arts, CIP 500601, October 2022

Washington University

C0, GIS Certificate, CIP 450702, June 2023

C0, Certificate in Data Analytics, CIP 110301, June 2023

C0, Healthcare Transition Certificate, CIP 510899, June 2023

C0, Certificate in Leadership & Organization Development, CIP 520201, June 2023

C0, Certificate in Business Writing, CIP 520201, June 2023

C0, Certificate in Project Management, CIP 520211, June 2023

C0, Certificate in Business, CIP 520201, June 2023

C0, Certificate in Marketing, CIP 521401, June 2023

Webster University

MS, Business Analytics, CIP 307102, June 2023

DEGREE ABBREVIATIONS

Certificates: C0, C1, C2, GRCT, PMCT

Associate degrees: AA, AS, AAS, AT

Baccalaureate degrees: BA, BS, BAS, BBA, BFA, BGS, BPS, BSED, BSL, BSN

Graduate degrees: DSL, MA, MS, MAT, MLIS, MLM, EDS, EDSp, EDD, PsYD, OTD, PhD

OFF-SITE, RESIDENCE & INSTRUCTIONAL SITE LOCATIONS

Updated Addresses:

Missouri University of Science & Technology
Fort Leonard Wood Location
Maneuver Support Center of Excellence (MSCOE)
Fort Leonard Wood Military Res.
Fort Leonard Wood, MO 65473

Missouri University of Science & Technology
Global St. Louis Location
12837 Flushing Meadows Drive, Suite 210
St. Louis, MO 63131-1823

Closed Locations:

Northwest Missouri State University
Northwest St. Joseph Center
3500 North Village Drive
St. Joseph, MO 64506

St. Charles Community College
Troy Site
1125 E. Cherry St.
Troy, MO 63379

State Technical College of Missouri at Three Rivers College
2080 Three Rivers Blvd.
Poplar Bluff, MO 63901

State Technical College of Missouri
at North Central Missouri College
1301 Main Street, Trenton, MO 64683

Webster University
Kansas City Metropolitan Center
1740 W. 92nd St.
Kansas City, MO 64114

Webster University
Rolla Metropolitan Center
1103 Kingshighway
Rolla, MO 6540

PROPRIETARY SCHOOL

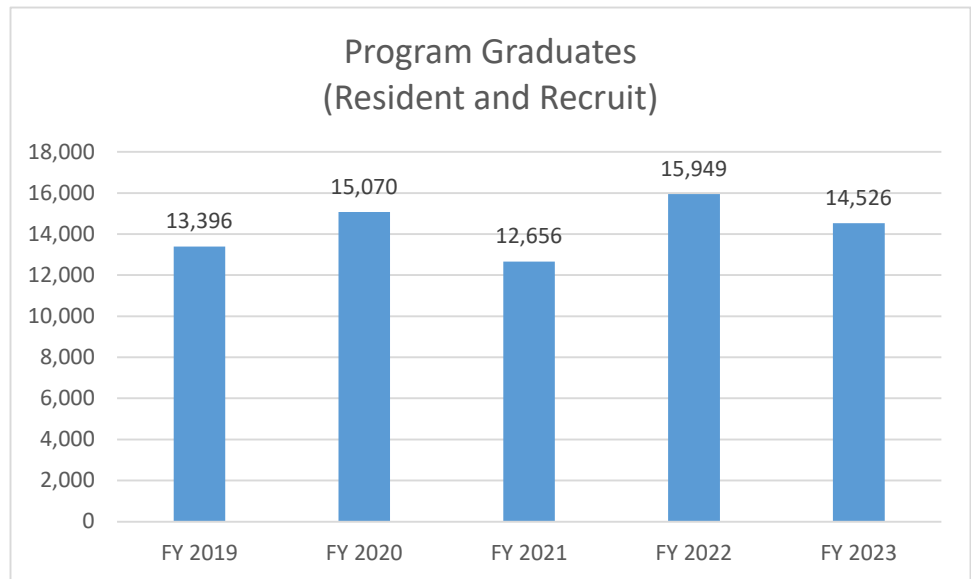
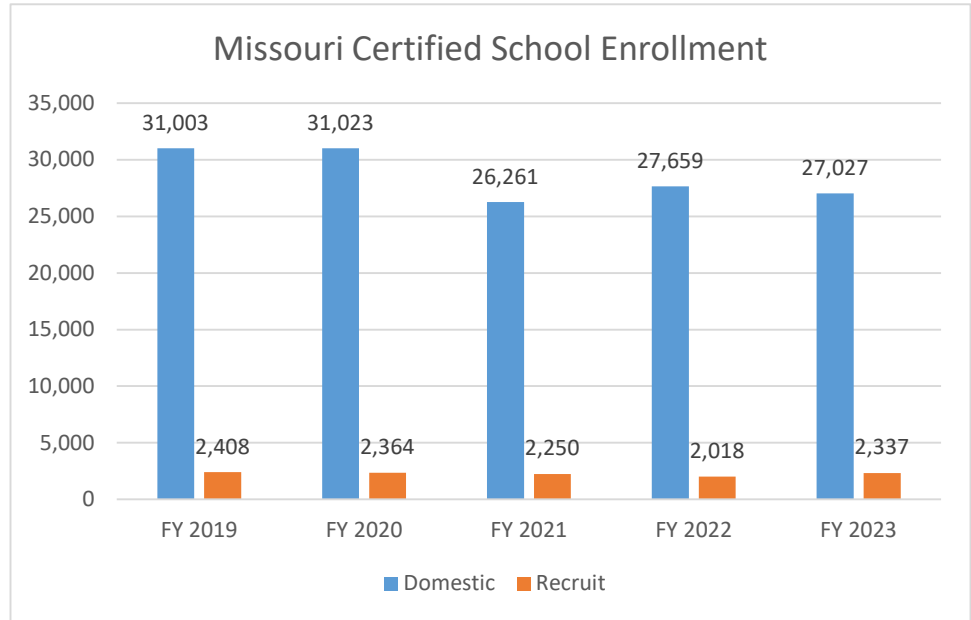
CERTIFICATION & ENROLLMENT

The Department of Higher Education & Workforce Development oversees operating standards for proprietary schools to ensure students are treated fairly and receive education and training consistent with the published objectives of the schools. Certified schools provide education and training in more than 1,000 degree and certificate programs.

During Fiscal Year (FY) 2023, department staff renewed the certification of 162 main and branch campuses in Missouri and 15 main and branch recruit campuses.

The number of students enrolled in a Missouri certified school in FY 2023 decreased slightly to 27,027. Student recruitment into programs out-of-state increased to 2,337.

More than 14,000 students graduated from a certified Missouri or recruit school in FY 2023.



CORE BUDGET RECOMMENDATIONS

The Coordinating Board for Higher Education's budget recommendations for state-supported public colleges and universities for the upcoming fiscal year are:

Institution	Fiscal Year 2024 core funding	Fiscal Year 2024 restrictions	Fiscal Year 2025 requested increase
Community Colleges	\$173,193,756	\$0	\$8,659,688
State Technical College	\$9,086,492	\$0	\$452,825
University of Central Missouri	\$64,720,067	\$0	\$3,236,004
Southeast Missouri State University	\$53,656,399	\$0	\$2,682,820
Missouri State University	\$109,934,978	\$0	\$5,496,749
Lincoln University*	\$33,152,465	\$0	\$3,885,292
Truman State University	\$48,720,074	\$0	\$2,436,104
Northwest Missouri State University	\$36,472,408	\$0	\$1,823,620
Missouri Southern State University	\$30,360,286	\$0	\$1,518,014
Missouri Western State University	\$26,017,755	\$0	\$1,300,888
Harris-Stowe State University	\$12,234,527	\$0	\$611,726
University of Missouri	\$486,803,773	\$0	\$24,340,189
Four-Year Institution Subtotal	\$902,074,752	\$0	\$47,331,406
Total All Sectors	\$1,084,355,000	\$0	\$56,443,919

Note: Core increase includes a New Decision Item (NDI) for a 5% inflationary increase.

* Lincoln University request includes the land-grant match NDI.

ENGLISH LANGUAGE

PROFICIENCY REPORT

Missouri universities with graduate programs regularly assign teaching assistantships to international students. Missouri statute requires all graduate students who did not receive their primary and secondary education in a nation or territory in which English is the primary language to be tested for their ability to communicate orally in English in a classroom setting.

Institutions are required to provide data every two years on the number and language background of all graduate teaching assistants (GTAs) and must provide a copy of the institution's policy for selection of these teaching assistants. While all institutions are required to submit biennial reports to the board, the effectiveness of programs for non-native English speakers with graduate teaching assistantships is monitored at the institutional level.

GTA English Language Proficiency Survey Results	Academic Year 2021	Academic Year 2022
Non-Native English Speaking GTAs	690	621
All GTAs	1,696	1,575
% Non-Native English Speaking GTAs	41%	39%

Highlights for the reporting period:

- 10 public universities award teaching assignments to graduate students.
- Total number of GTAs has decreased since its 2014 peak with the largest decrease coinciding with the COVID-19 pandemic.
- Of the Non-Native English Speaking GTAs, the largest percentage (8%) speak Chinese.

RECIPROCITY

State Authorization Reciprocity Agreement (SARA)-participating institutions:

- 25 public institutions
- 23 independent institutions
- 15 theological institutions
- 7 certified / proprietary institutions
- 6 specialized / technical institutions



DEPARTMENT OF
HIGHER EDUCATION &
WORKFORCE DEVELOPMENT

DHEWD.MO.GOV

P.O. Box 1469,
Jefferson City, MO 65102-1469

800-473-6757 • 573-751-3940

Fax: 573-751-6635

© 2023 Missouri Department of Higher
Education & Workforce Development